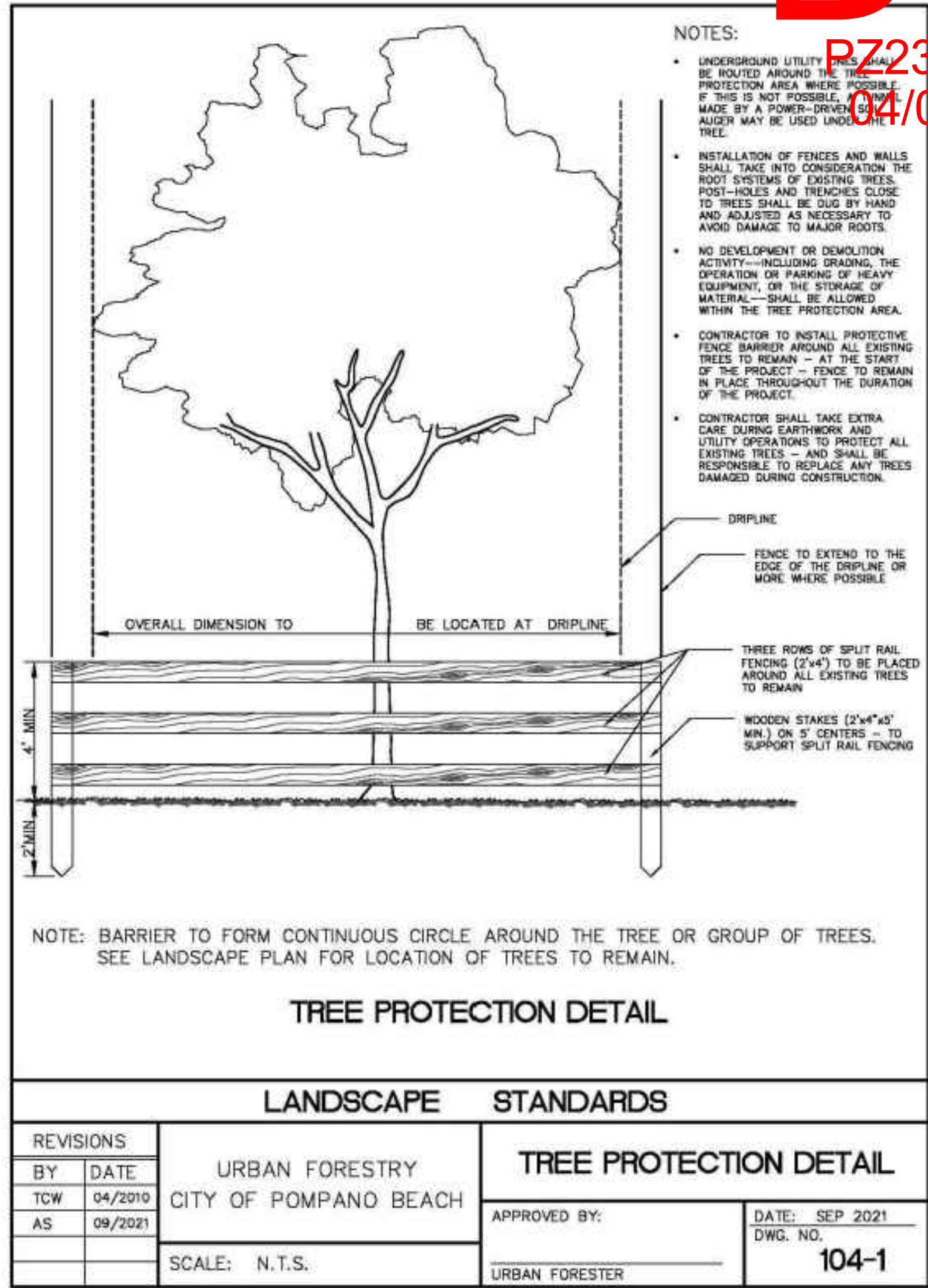


TREE DISPOSITION Plan

SCALE: 1/8" = 1'-0"

TREE DISPOSITION LIST RAHIM VEDAAE FL-9609A												
KEY	COMMON NAME	BOTANICAL NAME	DIAMETER (INCHES)	HEIGHT (FT)	SPREAD (FT)	CANOPY (S.F.)	CLEAR TRUNK (FT)	CONDITION (%)	DISPOSITION	COMMENT	MITIGATION	
1	Areca Palm	Dypsis lutescens	2	20	8	50.2	14	50%	Remove			
1A	Areca Palm	Dypsis lutescens	2	20	8	50.2	14	50%	Remove			
2	Areca Palm	Dypsis lutescens	2	20	8	50.2	14	50%	Remove			
3	Areca Palm	Dypsis lutescens	2	20	8	50.2	14	50%	Remove			
4	Areca Palm	Dypsis lutescens	2	20	8	50.2	14	50%	Remove			
5	Areca Palm	Dypsis lutescens	2	20	8	50.2	14	50%	Remove			
6	Areca Palm	Dypsis lutescens	2	20	8	50.2	14	50%	Remove			
7	Areca Palm	Dypsis lutescens	2	20	8	50.2	14	50%	Remove			
8	Areca Palm	Dypsis lutescens	2	20	8	50.2	14	50%	Remove			
9	Coconut Palm	Cocos nucifera	12	40	16	201.0	30	60%	Remove			
10	Coconut Palm	Cocos nucifera	10	20	18	254.3	10	50%	Remove			
11	Mango	Mangifera indica	14	25	20	314.0	10	50%	Remove			
12	Coconut Palm	Cocos nucifera	10	20	18	254.3	10	50%	Remove			
13	Coconut Palm	Cocos nucifera	10	20	18	254.3	10	50%	Remove			
14	Coconut Palm	Cocos nucifera	9	25	20	314.0	15	50%	Remove			
15	Coconut Palm	Cocos nucifera	10	20	18	254.3	10	50%	Remove			
16	Triangle Palm	Dypsis decaryi	14	18	16	201.0	9	70%	Remove			
17	Areca Palm	Dypsis lutescens	2	20	8	50.2	14	50%	Remove			
18	Areca Palm	Dypsis lutescens	2	20	8	50.2	14	50%	Remove			
19	Areca Palm	Dypsis lutescens	2	20	8	50.2	14	50%	Remove			
19A	Areca Palm	Dypsis lutescens	2	20	8	50.2	14	50%	Remove			
20	Areca Palm	Dypsis lutescens	2	20	8	50.2	14	50%	Remove			
21	Areca Palm	Dypsis lutescens	2	20	8	50.2	14	50%	Remove			
22	Areca Palm	Dypsis lutescens	2	20	8	50.2	14	50%	Remove			
23	Coconut Palm	Cocos nucifera	9	25	18	254.34	15	40	Remove			
24	Areca Palm	Dypsis lutescens	1	10	6	28.26	5	40	Remove			
25	Areca Palm	Dypsis lutescens	1	10	6	28.26	5	40	Remove			
26	Coconut Palm	Cocos nucifera	10	30	20	314	20	40	Remove			
27	Coconut Palm	Cocos nucifera	10	30	20	314	20	40	Remove			
28	Fishtail Palm	Caryota mitis	4	25	10	78.5	16	50	Remove			
29	Frangi Pani	Plumeria	7	12	10	78.5		60%	Remove			
30	Frangi Pani	Plumeria	4	15	15	176.6		50%	Remove			
31	South American oil Palm	Elaeis oleifera	12	20	6	28.26	4	60%	Remove			
31	Loquat	Eriobotrya japonica	2	10	8	50.24		50%	Remove			
32	Coconut Palm	Cocos nucifera	8	30	16	200.96	2	50%	Remove			
33	Areca Palm	Dypsis lutescens	2	20	10	78.5	13	50%	Remove			
33A	Areca Palm	Dypsis lutescens	2	20	10	78.5	13	50%	Remove			
34	Gumbo Limbo	Bursera simaruba	14	30	24	452.16		52%	Remove			
35	Triangle Palm	Dypsis decaryi	9	25	14	153.86	10	56%	Remove			
36	Areca Palm	Dypsis lutescens	2	20	10	78.5	13	50%	Remove			
37	Areca Palm	Dypsis lutescens	2	25	10	78.5	19	50%	Remove			
38	Areca Palm	Dypsis lutescens	2	25	10	78.5	19	50%	Remove			
39	Coconut Palm	Cocos nucifera						Dead	Remove			
40	Areca Palm	Dypsis lutescens	2	25	10	78.5	19	50%	Remove			
41	Areca Palm	Dypsis lutescens	2	25	10	78.5	19	50%	Remove			
42	Coconut Palm	Cocos nucifera	14	40	16	200.96	30	60%	Remove			
43	Areca Palm	Dypsis lutescens	2	25	10	78.5	19	50%	Remove			
44	Umbrella Tree	Schefflera arboricola	10	30	10	78.5		40%	Remove			
45	Areca Palm	Dypsis lutescens	2	25	10	78.5	19	50%	Remove			
46	Areca Palm	Dypsis lutescens	2	25	10	78.5	19	50%	Remove			
47	Sabal Palm	Sabal Palmetto	14	30	13	132.665	22	50%	Remove			
48	Coconut Palm	Cocos nucifera	12	40	16	201.0	30	60%	Remove			
49	Areca Palm	Dypsis lutescens	2	20	8	50.2	14	50%	Remove			
50	Areca Palm	Dypsis lutescens	2	20	8	50.2	14	50%	Remove			
51	Christmas Palm	Adonidia merrillii	4	9	10	78.5	5	60%	Remove			

Note: All undeveloped portions of a parcel of land shall be left undisturbed or planted with ground cover or lawn as to leave no exposed soil in order to prevent dust or soil erosion.



REVISION	DATE

EnviroScapes

4132 SW 51st Street
Dania Beach FL

NEW MULTI FAMILY RESIDENCE

1300 RIVERSIDE DRIVE
POMPANO BEACH FL

DRAWN BY:	
CHECKED BY:	
JOB NUMBER:	1300 R
DATE:	1/30/2024

N

SCALE 3/32"=1"

Hugh Johnson

Digital Seal

by Hugh Johnson

Date: 2024.02.14

08:14:22 -05'00'

TD-1